

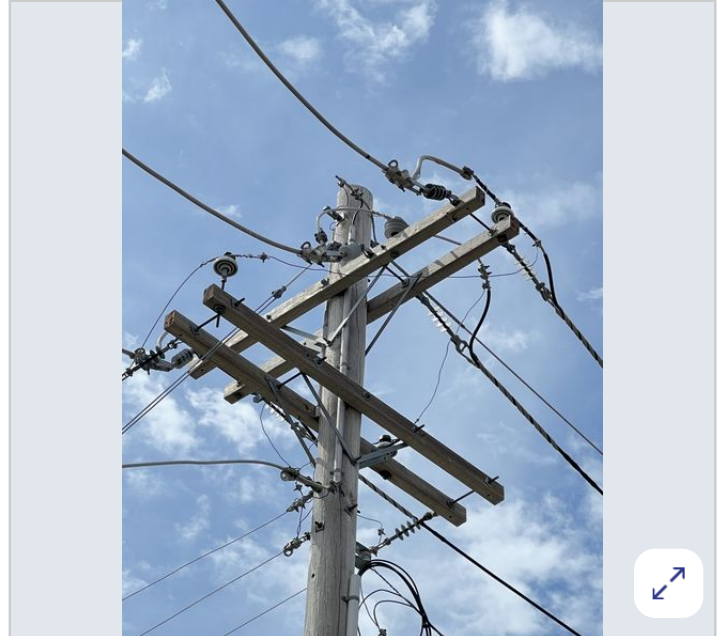
Status: Closed
Work Order: N/A
Joint Use: Yes
Joint Quantity: 2
Street Light: No

Priority: Critical
Assigned User: None
Location: [40.71417, -99.08288](#)
[All Images](#)
[View Attached Files](#)

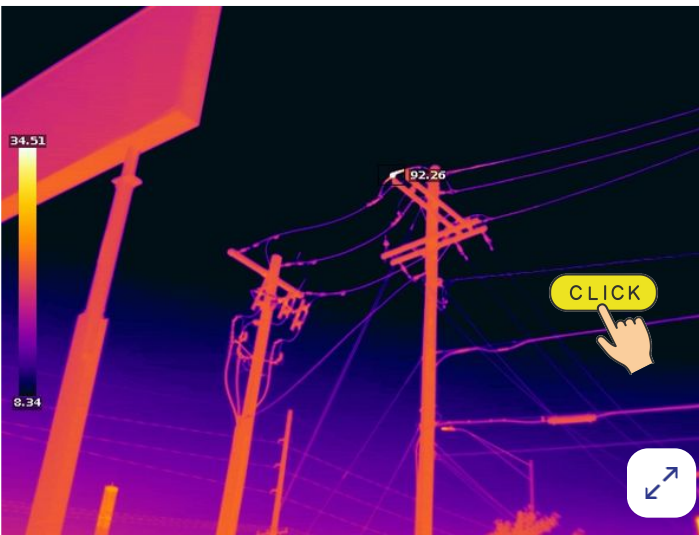
Scan Code >



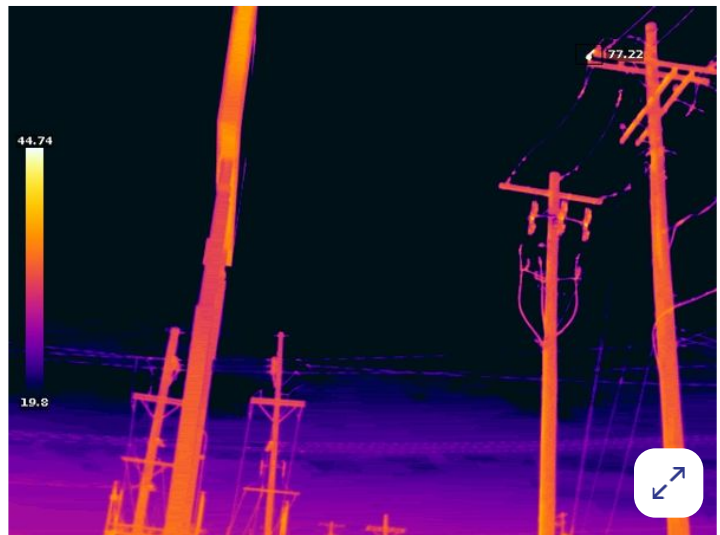
Date: Dec 13, 2023, 12:57:05 PM CST



Date: Jul 22, 2025, 3:58:51 PM CDT



Date: Jul 21, 2025, 4:49:02 PM CDT
AtmT: 24°C **Dist:** 37.13ft
E: 0.85 **AmbT:** 24°C
Notes: n/a



Date: Jul 22, 2025, 4:33:19 PM CDT
AtmT: 20°C **Dist:** 46.15ft
E: 0.85 **AmbT:** 20°C
Notes: n/a

Notes:

Visible confirmation shows melted insulation and excessive pitting in the bolted clamp on the jumper, also extremely hot to the touch. Repaired by Utility on 7/23.

Activity Log

Activity by Dusty Birge

- Notes updated to:

"Visible confirmation shows melted insulation and excessive pitting in the bolted clamp on the jumper, also extremely hot to the touch. Repaired by Utility on 7/23."

Jul 23, 2025, 1:31:47 PM CDT

Activity by Dusty Birge

- Unassigned from **Jerry Fales**

- Status changed to **Closed**

- Notes updated to:

"Visible confirmation shows melted insulation and excessive pitting in the bolted clamp on the jumper, also extremely hot to the touch. Repaired by Utility on 7/23, visible "

Jul 23, 2025, 1:31:09 PM CDT

Activity by Dusty Birge

- Assigned to **Jerry Fales**

Jul 21, 2025, 11:43:58 PM CDT

Activity by Dusty Birge

- Joint Use changed to **Yes**

- Joint Use quantity changed to **2**

Jul 21, 2025, 11:43:35 PM CDT

Activity by Dusty Birge

- Notes updated to:

"East most insulator and jumper showing significant hot spot, near 100C. "

Jul 21, 2025, 11:42:54 PM CDT

Activity by Dusty Birge

- Location updated from **(40.714144026, -99.082868735)** to **(40.71417415, -99.082880367)**

Jul 21, 2025, 11:39:45 PM CDT